

ADVANCING HEALTH EQUITY:

LEADING CARE, PAYMENT, AND SYSTEMS TRANSFORMATION

All-Team Virtual Convening

January 11-12, 2023, 11 am-4 pm CST



About AHE

Advancing Health Equity: Leading Care, Payment, and Systems Transformation is a national program supported by the Robert Wood Johnson Foundation and based at the University of Chicago. AHE 's mission is to discover best practices for advancing health equity by fostering payment reform and sustainable care models to eliminate health and healthcare disparities.

Contents

Welcome & AHE Program Background	3
Agenda	4
Learning Collaborative Teams	6
The AHE Team & Robert Wood Johnson Foundation	20
AHE National Advisory Committee Members	33
2023-2024 AHE Program Important Dates	40
Thank You	41

Welcome to the January 2023 All-Team Virtual Convening!

We are looking forward to two days of thought-provoking discussion, relationship building, and exploring future possibilities. We are honored and delighted to partner with you as we enter the second iteration of our Learning Collaborative.

The Advancing Health Equity: Leading Care, Payment, and Systems Transformation (AHE) program's Learning Collaborative strives to align state Medicaid agencies, Medicaid managed care organizations, healthcare provider organizations, community-based organizations, and individuals with experience being enrolled in Medicaid to design and implement equity-focused health care transformation interventions supported by integrated payment models.

Launched in 2018, the first Learning Collaborative brought together three of the five current stakeholders (state Medicaid agencies, Medicaid managed care organizations, and healthcare provider organizations) to address one or more health equity focus areas, diagnose the unique patient, provider, community, organizational, and policy-level factors leading to the health inequities, and then design and implement a tailored, integrated care and payment transformation.

At the time, many organizations were not ready to address systemic racism. However, the stark disparities in morbidity and outcomes for COVID-19 by race/ethnicity and socioeconomic status, and simultaneous public outrage at police brutality against Black and Brown people, have heightened awareness of systemic racism and accelerated the pace at which individuals and organizations have become ready to tackle systemic racism and social determinants of health as drivers of health inequities.

With continued support from the Robert Wood Johnson Foundation, the newest iteration of the Learning Collaborative strives to explicitly address systemic racism, oppression and discrimination to advance health equity, and build authentic partnerships with communities and members/patients. We know that it isn't enough to consult community members as an afterthought - communities must be centered as decision-makers and included as essential stakeholders of our Learning Collaborative. Five new teams will be joining the existing seven teams and these new teams have committed to include individuals with experience enrolled in Medicaid and potentially community based organizations as a part of their Learning Collaborative team.

We hope this convening will be an opportunity to connect (or re-connect) with peers, build new relationships within and across state lines, and inspire new possibilities for advancing health equity. Again, welcome and we look forward to partnering with you.

With gratitude,
The AHE Team

Advancing Health Equity

All Team Convening Agenda



Day 1: Wednesday, January 11, 2023

Time (CT)	Session Topic	Session Objectives
11am-11:15am <i>15 min</i>	Welcome and Introductions	Participants will learn what to expect for the first day of the Convening. Participants will be given an opportunity to network in small groups and get to know other Learning Collaborative team members better.
11:15am-12pm <i>45 min</i>	Orientation to AHE Learning Collaborative and Overview of AHE Roadmap	Participants will receive an overview of the AHE program, the Roadmap, and will get acclimated to the structure of the program.
12-1pm <i>60 min</i>	Why Antiracism? <i>Panel Discussion</i>	Participants will have a foundational understanding of what antiracism is and what it looks like in healthcare. Participants will be motivated to continue the pursuit of advancing health equity through concrete examples of how it can be and has been done.
1-2pm <i>60 min</i>	Break	
2-2:30pm <i>30 min</i>	Getting to know The Justice Collective	Participants will have an opportunity to learn about The Justice Collective (TJC) and meet the TJC team.
2:30-4pm <i>90 min</i>	Cross-Team Relationship Building	Participants will build trust and relationships across Learning Collaborative teams and cohorts.

Advancing Health Equity

All Team Convening Agenda



Day 2: Thursday, January 12, 2023

Time (CT)	Session Topic	Session Objectives
11am–11:15am <i>15 min</i>	Welcome Back and Introductions	<p>Participants will learn what to expect for Day 2 of the Convening.</p> <p>Participants will be given an opportunity to network in small groups and get to know other Learning Collaborative team members better.</p>
11:15am–12:15pm <i>60 min</i>	Partnering with Medicaid Members <i>Workshop</i>	<p>Participants, including AHE TA team members, will learn about the importance of developing strong partnerships with Medicaid members to advance health equity and drive their AHE projects.</p> <p>Participants will work with their teams to assess their current efforts to develop partnerships with Medicaid members and set goals to strengthen their partnerships.</p> <p>Participants will work with their teams to develop concrete next steps that will help them build and strengthen partnerships with Medicaid members.</p>
12:15–1:15pm <i>60 min</i>	Break	
1:15–2pm <i>45 min</i>	Lessons Learned from AHE Veterans <i>Panel Discussion</i>	<p>Participants will hear about lessons learned from team members that joined the Learning Collaborative in 2019 with respect to cultures of equity, care delivery transformation, and payment reform.</p> <p>Participants will leave with ideas for how they can think about their own team's work differently.</p>
2–3:30pm <i>90 min</i>	Intrateam Relationship Building <i>Breakouts by Learning Collaborative Team</i>	<p>Participants will continue to build trust and further relationships within their individual Learning Collaborative teams.</p>
3:30–4pm <i>30 min</i>	Closing/Q&A Session	<p>Participants will have time to reflect on the Convening and what they are taking back home with them.</p> <p>Participants will receive information on what to expect in the coming months related to AHE programming and technical assistance.</p> <p>Participants will have the opportunity to ask the AHE team and other LC participants any outstanding questions.</p>

Learning Collaborative Teams

Teams joining in 2023

District of Columbia

Louisiana

Mississippi

New York

Pennsylvania

Teams that joined in 2019

Delaware

Illinois

Maine

New Jersey

Pennsylvania

Tennessee

Washington

Learning Collaborative Teams

District of Columbia

- DC Department of Health Care Finance
- UnitedHealthcare Community Plan
- DC Primary Care Association
- Medstar Health

Team Members

- Allie Liss, Project Manager, Department of Health Care Finance
- Angela Lello, Regional Director of Policy, East, UnitedHealthcare Community Plan & State
- Carleta Belton, Department of Health Care Finance, Special Projects Officer, Health Care Delivery and Management
- Cleveland Woodson, Chief Operating Officer, MedStar Health
- DaShawn Groves, Special Projects Officer, Department of Health Care Finance
- David Poms, Partnerships Manager, DC Primary Care Association
- Donna Ramos Johnson, Chief Operating and Technology Officer, DC Primary Care Association
- Erin Henderson Moore, Executive Director, UnitedHealthcare Community Plan
- Feseha Woldu, Vice President for Population Programs and Community Affairs, MedStar Health
- Jonathan Perry, VP of Quality and Practice Transformation, DC Primary Care Association
- Nicole Truhe, Senior Director of Policy, Medicaid, UnitedHealthcare Community Plan & State
- Patricia (Tricia) Quinn, VP of Partnerships & Policy, DC Primary Care Association
- Patrick Canavan, CNVN Consult, Consult for MedStar Health
- Sarah Goldman, Emergency Medicine Physician, MedStar Health
- Thomas (Jomy) Mathew, Chief Medical Officer, UnitedHealthcare Community Plan

Learning Collaborative Teams

Louisiana

- Louisiana Department of Health

Team Members

- Ingrid Fields, Health Equity/Population Health Supervisor, Louisiana Department of Health
- Tim Williams, Section Chief, Louisiana Department of Health

Learning Collaborative Teams

Mississippi

- Mississippi State Department of Health
- UnitedHealthcare
- Community Health Center Association of Mississippi

Team Members

- Christopher Roby, Chief Operations Officer, Community Health Center Association of Mississippi
- Dana Carbo-Bryant, Chief Medical Officer, UnitedHealthcare Community & State
- Gladys Peters, Health Equity Project Manager, Mississippi Department of Health
- Jennifer Brumfield, Director of Population Health, UnitedHealthcare Community & State
- Nikki Johnson, Director of Special Projects, Mississippi Department of Health
- Sonja Fuqua, Chief Clinical Services Officer, Community Health Center Association of Mississippi

Learning Collaborative Teams

New York

- New York State Department of Health
- Healthfirst
- Sun River Health

Team Members

- Christopher Quinones, Chief Administrative Officer, Sun River Health
- James Sinkoff, Deputy Executive Officer & CFO, Sun River Health
- Joao Faustino, Director of Government Affairs, Sun River Health
- Laura Rodriguez, Executive Project Assistant, Sun River Health
- Rashi Kumar, Director, Research and Policy, HealthFirst
- Susan Beane, Executive Medical Director, HealthFirst

Learning Collaborative Teams

Pennsylvania (2023)

- Pennsylvania Department of Human Services, Office of Medical Assistance Programs
- UPMC for You, UPMC Health Plan
- Community Care Behavioral Health Organization, UPMC
- Geisinger Health Plan
- Magee-Womens Hospital of UPMC
- Geisinger Women and Children's Institute
- Healthy Start, Inc.

Team Members

- Amanda Cresswell, System Vice President Nursing Professional Development Magnet and Research, Geisinger Health System
- Andrea Wary, Vice President, Women's and Children's Institute, Geisinger Health System
- April Barnes, Manager, Actuarial Services, Geisinger Health Plan
- Beth Quinn, Senior Director of Women's Health Operations, UPMC Magee-Womens Hospital
- Brett Eshenour, Senior Medical Economist, PA Department of Human Services
- Bridget Gill-Gibson, Pennsylvania Department of Human Services
- Cara Nikolajski, Senior Director, Research Design and Implementation, UPMC Center for High-Value Health Care, UPMC Insurance Services Division
- Dale Adair, Medical Director for Mental Health/Substance Abuse Services, Office of Mental Health and Substance Abuse Services, PA Department of Human Services
- Dan Swayze, Vice President, Community Services, UPMC Insurance Services Division
- Dara Daneen Mendez, Associate Professor, Epidemiology, University of Pittsburgh, School of Public Health, Medicaid Research Center
- David Kelley, Chief Medical Officer, Pennsylvania Department of Human Services
- Demia Tyler, Director of Strategic Initiatives, Healthy Start, Inc.
- Elissa M. Concini, Quality and Safety RN for OB/GYN and Women's Subspecialties, Geisinger Health System
- Ellen Beckjord, Vice President, Population Health and Clinical Optimization, UPMC Insurance Services Division
- Heidi Stevenson, Senior Director, Department of Health Economics, UPMC Insurance Services Division

- Hyagriv Simhan, Chief of Division of Maternal-Fetal Medicine, Vice Chair of Obstetrics and Gynecology & Director of Patient Care Delivery Innovation & Technology, UPMC Magee-Womens Hospital
- Jada Shirriel, Chief Executive Officer, Healthy Start, Inc.
- James Schuster, Chief Medical Officer, UPMC Insurance Services Division
- Jamie Edwards, Senior Director, Care Management & Customer Service, Community Care Behavior Health Organization, UPMC
- Jeffrey Zeisloft, Director of Quality Management, Geisinger Health Plan
- Joann Sciandra, Vice President of Care Coordination and Integration, Geisinger Health Plan
- John Bulger, Chief Medical Officer, Geisinger Health Plan
- John Lovelace, President, Government Programs, UPMC for You, UPMC Health Plan
- Karen Mallah, Senior Director, Quality Management, Community Care Behavior Health Organization, UPMC
- Katie Domalakes, Senior Director, Clinical Affairs & Program Development, UPMC Insurance Services Division
- Kimberly Drumgo, Chief of Diversity, Equity, and Inclusion, Geisinger Health Plan
- Lori Fertall, Director, Value-Based Programs, Community Care Behavior Health Organization, UPMC
- Lori Weems, Program Manager, Social Racial Justice/Health Equity, Community Care Behavior Health Organization, UPMC
- Marian Jarlenski, Associate Professor & Vice Chair for Practice, Health Policy & Management, University of Pittsburgh, School of Public Health, Medicaid Research Center
- Mark Mihalyo, Senior Director, Medicaid Products Analytics, Community Care Behavior Health Organization, UPMC
- Matthew Hurford, President & Chief Executive Officer, Community Care Behavior Health Organization, UPMC
- Nichol Reinford, Senior Finance Partner, Geisinger Health Plan
- Paul Forlenza, Director of Provider Contracting, Geisinger Health Plan
- Ray Prushnok, Executive Director, UPMC Center for Social Impact & Associate Vice President, Government Programs, UPMC Insurance Services Division
- Rebecca Knoll, Senior Director of Clinical Innovation, UPMC Insurance Services Division
- Sonika Bhatnagar, Senior Medical Director of Pediatric Population Health and Associate Professor of Pediatrics, UPMC Insurance Services Division, University of Pittsburgh School of Medicine, and UPMC Children's Hospital of Pittsburgh
- Stacey Staudenmeier, Associate Vice President of Behavior Health and Health Choices, Geisinger Health Plan
- Stephanie Finneran, Program Director, Health Equity, UPMC Insurance Services Division
- Tom Aubel, Associate Vice President, Reimbursement, UPMC Insurance Services Division
- Tovah Bates, Senior Director, Quality Regulatory Affairs, Strategy & Operations, UPMC Insurance Services Division
- Tracy Carney, Senior Recovery and Resiliency Specialist & Facilitator of Member Advisory Committee, Community Care Behavior Health Organization, UPMC

Learning Collaborative Teams

Delaware

- Delaware Division of Medicaid and Medical Assistance
- AmeriHealth Caritas Delaware
- Nemours Children's Health

Team Members

- Audrey Burton, Provider Performance Analyst, AmeriHealth Caritas
- Bilal Taylor, Senior Director, Strategy & Administration, Nemours Children's Health
- Danielle Brooks, Director, Health Equity, AmeriHealth Caritas
- Dara Hall, Maternal Child Health Clinical Lead, Division of Medicaid and Medical Assistance
- Deya Anamanya, AmeriHealth Caritas
- Elizabeth Brown, Medical Director, Division of Medicaid and Medical Assistance
- Jim Jones, VP Healthcare Analytics, AmeriHealth Caritas
- Karen Wilding, Vice President and Chief Value Officer, Nemours Children's Health
- Kelli Thompson, Director, Population Health Management, Nemours Children's Health
- Kevin Leonard, Manager, Value-Based Contracting, AmeriHealth Caritas
- Lindsey Mitrook, Director, Value-based Care, AmeriHealth Caritas
- Maima Radcliffe, CLAS Coordinator Specialist, Health Equity, AmeriHealth Caritas
- Nnenna Nduka, Provider Network Account Executive II, AmeriHealth Caritas
- Rachel Thornton, Vice President and Enterprise Chief Health Equity Officer, Nemours Children's Health
- Richard Holaday, Quality Director, Division of Medicaid and Medical Assistance
- Victoria Riina, Provider Performance Analyst, AmeriHealth Caritas

Learning Collaborative Teams

Illinois

- Illinois Department of Healthcare and Family Services
- Cook County Health
- CountyCare Health Plan
- ACCESS Community Health Network
- Center for Housing and Health

Team Members

- Aaron Eldridge Jr., Community & Social Service Manager, Cook County Health
- Anh Reiland, VP Quality and Population Health , ACCESS Community Health Network
- Ann Lundy, Chief Operating Officer, ACCESS Community Health Network
- Chante' Gamby, Housing Coordinator, Cook County Health
- Dan Jenkins, Bureau Chief, Rate Development and Analysis, Illinois Department of Healthcare and Family Services
- Dave Thomas, Director, Flexible Housing Pool, Center for Housing and Health
- David Allen, Financial Analyst, CountyCare
- Gabriela Moroney, Senior Public Service Administrator, Illinois Department of Healthcare and Family Services
- Jessica Chatman, Integrated Health Home Program Manager, Cook County Health
- Kati Hinshaw, Senior Public Service Administrator, Illinois Department of Healthcare and Family Services
- Keiki Hinami, Physician, Cook County Health
- Kim McCullough-Starks, Deputy Director, Community Outreach, Illinois Department of Healthcare and Family Services
- Paige Clincy, Manager of Community and Social Services, CountyCare
- Peter Toepfer, Vice President of Housing, Executive Director, AIDS Foundation Chicago, Center for Housing and Health
- Samantha Gray, Systems Analyst, Business Intelligence, CountyCare
- Thea Kachoris-Flores, Director Of Planning And Development, ACCESS Community Health Network
- Yvonne Collins, Chief Medical Officer, CountyCare

Learning Collaborative Teams

Maine

- MaineCare
- Community Care Partnership of Maine
- Maine Primary Care Association
- Aroostook Mental Health Services

Team Members

- Darcy Shargo, Chief Executive Officer, Maine Primary Care Association
- Fran Jensen, Medical Director, MaineCare
- Hillary Colcord, Health Equity Program Manager, Maine Primary Care Association
- Loretta Dutill, Operations Manager, Value-Based Purchasing, MaineCare
- Lorraine Chamberlain, Director of Behavioral Health and Integration Services, Aroostook Mental Health Services
- Malory Shaughnessy, Executive Director, Alliance Maine
- Martin Sabol, Director of Care Management, Community Care Partnership of Maine
- Olivia Alford, Director, Value-Based Purchasing, MaineCare
- Sharon Stanley, Director of Operations Improvement, Maine Primary Care Association

Learning Collaborative Teams

New Jersey

- The New Jersey Department of Human Services, Division of Medical Assistance and Health Services
- Horizon Blue Cross Blue Shield of New Jersey
- RWJBarnabas Health: Newark Beth Israel Medical Center

Team Members

- Brian O'Shaughnessy, Manager, Clinical Operations for GEMS (Getting Early Maternity Settings) program, Horizon BCBSNJ
- Danielle Holland, Program Specialist, New Jersey Department of Human Services
- Giovannie Jean-Baptiste, Executive Medical Director, Horizon BlueCross BlueShield NJ
- Jana Lang, New Jersey Department of Human Services
- Lisa Tremayne, Director, Center for Perinatal Mood and Anxiety Disorders, RWJBarnabas Health
- Maruf Rahman, VP Population Health, RWJBH, RWJBarnabas Health
- Shanique McGowan, Program Manager, New Jersey Department of Human Services
- Simone Edwards, Director, Special Projects , Horizon BCBSNJ
- Suzanne Sernal, Vice President, Women's Services, RWJBarnabas Health
- Tarloh Mouphoet, Project Manager, Horizon BCBSNJ
- Valerie Harr, Director, Community Health-Enterprise, Horizon BCBSNJ
- Wendy Morriarty, Vice President, Chief Medicaid Officer, Horizon BCBS NJ

Learning Collaborative Teams

Pennsylvania (2019)

- Pennsylvania Department of Human Services, Office of Medical Assistance Programs
- Highmark Wholecare
- Allegheny Health Network
- North Side Christian Health Center

Team Members

- Anita Edwards, Medical Director-GHP, Medical Management, Highmark Wholecare
- Carilynn Coulter, Chief Operations Officer, Northside Christian Health Center
- Claire Rumpler, Allegheny Health Network
- Dallas Malzi, Pediatric Provider, Northside Christian Health Center
- David R Kelley, Chief Medical Officer, State Medicaid Agency
- Denise Imperatore, Allegheny Health Network
- Emily Baran, Product Analyst, Highmark Wholecare
- Fernando Arbelaez, Senior Director Research Development and Analytics, Highmark Wholecare
- Jessica Hollie, Allegheny Health Network
- Jessica Zhang, Data Scientist, Highmark Wholecare
- Joan Hull, Allegheny Health Network
- Joseph Aracri, System Chair of Pediatrics, Allegheny Health Network
- Katrina Becker, Bureau of Managed Care Operations, State Medicaid Agency
- Martha Rhue, Executive Administrative Assistant, Highmark Wholecare
- Matthew Schreiber, State Medicaid Agency
- Paul J. Lebovitz, System Vice Chair of Integration, Allegheny Health Network
- Rebecca Vidak, Clinical Quality Management Consultant- EPSDT, Highmark Wholecare
- Ryan Kane, Quality Analyst, Northside Christian Health Center
- Shamly Austin, Health Services Researcher, Highmark Wholecare
- Stuart Fisk, Director, CIH, Allegheny Health Network

Learning Collaborative Teams

Tennessee

- TennCare
- UnitedHealthcare Community Health Plan of Tennessee
- Tennessee Maternal Fetal Medicine, PLC
- Meharry College of Medicine

Team Members

- Benjamin Vaughan, Chief Operating Officer, Tennessee Maternal Fetal Medicine
- Brandy Eddlemon, Director of Women's Health and Pediatric Clinical Operations, UnitedHealthcare Community Health Plan of Tennessee
- Cornelia Graves, Medical Director, Tennessee Maternal Fetal Medicine, PLC
- Joel Bradley, Chief Medical Officer, UnitedHealthcare Community Health Plan of Tennessee
- Jona Bandyopadhyay, Maternity Medical Director, TennCare
- Kiffany Peggs, Associate Medical Director, UnitedHealthcare Community Health Plan of Tennessee
- Lauren Barca, Vice President, Integrated Services, Population Health & Quality, UnitedHealthcare Community Health Plan of Tennessee
- Michael Currie, Senior Vice President & Chief Health Equity Officer, UnitedHealth Group
- Nicolette Wise, Social Determinants of Health Director, TennCare
- Robert James, Strategy Manager, TennCare
- Victor Wu, Chief Medical Officer, TennCare
- Xylina Bean, Professor and Chair, Department of Pediatrics, Meharry Medical College

Learning Collaborative Teams

Washington

- Washington State Health Care Authority
- Community Health Plan of Washington
- Community Health Network of Washington

Team Members

- Ashley Boysen, Contract Manager, WA State Health Care Authority
- Christopher Chen, Associate Medical Director, WA State Health Care Authority
- Colleen Haller, Manager, Care Improvement , Community Health Plan of Washington
- Diana Cockrell, Section Manager, WA State Health Care Authority
- Elizabeth Tinker, Clinical Nurse Consultant/MCH Advisor, WA State Health Care Authority
- Erin Hafer, Manager of New Programs Integration, Community Health Plan of Washington
- Fathiya Abdi, Public Policy Analyst, Community Health Plan of Washington
- Glory Dole, Section Manager, WA State Health Care Authority
- Jamie Hamilton , Program Manager, Care Improvement, Community Health Plan of Washington
- Kat Latet, Director, Health System Innovation, Community Health Plan of Washington
- Kayla Salazar, Program Manager, Health Equity, Community Health Plan of Washington
- Kristol Parker, Manager of Care Management, Community Health Plan of Washington
- Leanne Berge, Chief Executive Officer, Community Health Plan of Washington
- Michelle Glatt, Vice President of Population Health, Community Health Network of Washington
- Quyen Huynh, Health Equity Manager, WA State Health Care Authority
- Theresa Hattori, Project Coordinator, Health Systems Innovation, Community Health Plan of Washington
- Ugbad Hassan, Program Manager of Health Equity, Community Health Plan of Washington

The AHE Team

The AHE technical assistance team, comprised of the University of Chicago, the Center for Health Care Strategies (CHCS), The Justice Collective (TJC), and the Institute for Medicaid Innovation (IMI) will offer support and capacity-building services to teams as they work to collectively design and implement payment and health care delivery reform interventions to advance health equity in partnership with their members and patients.



Marshall Chin, Co-Director, University of Chicago

Marshall H. Chin, M.D., M.P.H., is the Richard Parrillo Family Professor of Healthcare Ethics in the Department of Medicine at the University of Chicago and Co-Director of the Robert Wood Johnson Foundation Advancing Health Equity: Leading Care, Payment, and Systems Transformation National Program Office.

Dr. Chin is a practicing general internist and health services researcher who has dedicated his career to reducing health disparities through interventions at individual, organizational, community, and policy levels. Through Advancing Health Equity he collaborates with teams of state Medicaid agencies, Medicaid-managed care organizations, frontline healthcare organizations, and communities to develop and implement payment reforms to support and incentivize care transformations that advance health equity.

Dr. Chin co-chairs the Centers for Medicare and Medicaid Services Health Care Payment Learning and Action Network Health Equity Advisory Team. He also applies ethical principles to reforms to reduce health disparities, discussions about a culture of equity, and what it means for health professionals to care and advocate for their patients. Dr. Chin is a former President of the Society of General Internal Medicine and was elected to the National Academy of Medicine in 2017.



Scott Cook, Co-Director, University of Chicago

Dr. Cook is a clinical psychologist experienced in providing integrated behavioral health services in primary care clinics and hospitals serving diverse and resilient urban and rural populations. He received his masters and doctoral degrees from the University of Missouri-Columbia. He completed his internship at Cook County Stroger Hospital, the major public hospital in Chicago.

Scott worked for eight years in leadership and clinical roles in research, behavioral health, youth services, and community services at Howard Brown Health, serving the diverse LGBTQIA+ communities of Chicago. He was the deputy director of Finding Answers, a national program of the Robert Wood Johnson Foundation, a faculty member for the Taking Action on Overuse Fellowship program, and serves on the FamiliesUSA Health Equity Task Force.

He works at UChicago Medicine in quality improvement and organizational development roles to eliminate health inequities. He also partners with his teammates to advance the organization's equity, diversity, and inclusion innovation agenda. Dr. Cook is a founding co-chair of the University of Chicago LGBT+ Resource Group, a recipient of the University's

Diversity Leadership Award and has volunteered in multiple capacities in community organizations, including serving eight years in various leadership positions as a board member of TPAN.



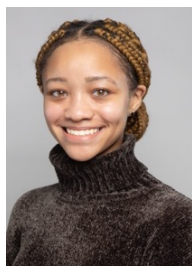
Suzi Montasir, Deputy Director, University of Chicago

Suzi is the Deputy Director of the Advancing Health Equity Program and has over 12 years of public health experience. Prior to joining the University of Chicago, Suzi oversaw evidence-based chronic disease prevention and management programs at the national YMCA resource office (Y-USA). In this role, she drove improvements to program implementation and technical assistance provided to local YMCAs delivering evidence-based programming, including the YMCA's Diabetes Prevention Program which played an integral role in the eventual coverage of the Diabetes Prevention Program by Medicare. This included the development, testing, and revising of trainings, tools, and resources to ensure success. Before Y-USA, Suzi worked at the American Academy of Pediatrics (AAP) on projects related to reducing health disparities around childhood asthma with a focus on the family-centered medical home approach to care. Prior to that, she worked at the IL Chapter of the AAP where she helped launch a childhood obesity initiative aimed at linking families to community-based resources to support healthier lifestyles. Suzi received her Bachelor of Arts in Psychology and Cultural Anthropology from the University of Michigan and her Master of Public Health from the University of Illinois at Chicago, where she focused on maternal and child health.



Kim Singletary, DEI & Communications Manager, University of Chicago

Kim Singletary received her PhD in Communication from Northwestern University with a focus on visual rhetoric and critical race and ethnic studies. She received her MA from Georgetown University's Communication, Culture, Technology program, and her BJ from the Missouri School of Journalism with a concentration in news editorial journalism. She has presented her theoretical work on representations of blackness in the global public sphere across Europe and North America. She has nearly a decade of experience giving public talks and leading workshops on race, equity, and inclusion for non-academic audiences across the West Coast and Midwest. After more than 10 years in the classroom, she left academia for the field of educational technology before coming to the Advancing Health Equity team.



Michelle Gorrell, Project Coordinator, University of Chicago

Michelle serves as a project coordinator on the AHE team. She is a Master of Public Health and Master of Business Administration (MPH/MBA) candidate at DePaul University. Michelle comes with several years' experience in customer service, healthcare, volunteering, and research. She is interested in using her knowledge and leadership skills to research and develop innovative solutions to health issues. Her passion about eliminating health disparities has motivated her desire to promote health equity and prevent illness and injury. Her interest in public health developed after she became a research assistant at Rush University Medical Center. The experience deepened her critical thinking, organization, and problem-solving skills, which she applied to various research projects focusing on access to care and health disparities. Some of Michelle's favorite hobbies to indulge in when she's not consumed by her studies are traveling, listening to music, reading, and trying new restaurants.

Ashley Skorski, Program Administrator, University of Chicago

Ashley currently provides administrative support to Dr. Monica Peek, Dr. Marshall Chin, and their project staff in the Section of General Internal Medicine. Ashley received her bachelor's degree in 2015 from Saint Xavier University and her master's degree in 2016. Ashley joined the University as a staff member in 2018.

**Jonnsebastian Orozco, DEI Manager, University of Chicago**

Prior to his work at the University of Chicago, Jonnsebastian was a staff attorney at Legal Council for Health Justice where he led three Medical-Legal Partnerships (MLPs) throughout Chicago. MLPs provide a framework in which medical providers work in collaboration with a legal aid partner to transform medical practices and the way patients are served. Through the MLPs that he led, he implemented a curriculum to educate healthcare staff about the range of social, economic, or environmental issues, and other inequities that harm the health of patients. Jonnsebastian led training to educate healthcare providers on how to screen patients for underlying health-harming legal needs. He also provided direct services and legal representation patients who presented with health-harming legal needs.

Jonnsebastian earned his B.A. in International Relations and Political Science with a minor in criminal justice from Florida International University. While an undergraduate, he studied abroad in Brazil leading a human rights project with AISEC, an internationally acclaimed non-governmental organization. Later, he graduated from the UIC School of Law in 2019, working as the Research Assistant for the director of the International Human Rights Clinic during his time there. In March of 2020, Jonnsebastian was admitted to the Illinois State Bar to practice law.

Originally from South Florida, Jonnsebastian is a queer, first-generation, Latine attorney of Colombian descent and a native Spanish speaker. As a result of his lived experiences and his intersecting identities, he has developed a passion for human rights and health equity work.

**Abby Wong, Health Systems Transformation Specialist, University of Chicago**

Abby (they/them) is a public health professional working toward equitable systems design and policy. They are especially passionate about LGBTQ+ health and wellness, especially for transgender and gender expansive individuals. They received their Master of Public Health with concentration in Health Systems and Policy from Johns Hopkins School of Public Health with a certificate in LGBTQ+ Health. They have direct advocacy experience, delivering oral and written testimony against anti-trans, anti-queer bills in the 2022 Maryland state legislative session and academic pursuits investigating violence affecting non-binary and gender-expansive people in the U.S. during the COVID-19 pandemic.

Prior to their graduate program, they lived and worked in St. Louis, Missouri for six years. As an Evaluation and Data Coordinator at Creative Reaction Lab, they developed a background in culturally responsive program evaluation and application of a Equity-Centered Community Design framework to health and racial equity work. They also have worked several capacities in the HIV service field, coordinating client services, building external stakeholder partnerships, and HIV/STI-specific community outreach with Vivent Health, an HIV medical home.

Abby received their Bachelor of Arts in Architecture from Washington University in St. Louis' Sam Fox School of Design with a secondary major in Biology. Outside of work, Abby enjoys frolicking in natural habitats, restoring old homes, and sipping coffee next to their four cats and two bunnies.



Tricia McGinnis, Executive Vice President and Chief Program Officer, Center for Health Care Strategies

Tricia McGinnis, MPP, MPH, is executive vice president and chief program officer at the Center for Health Care Strategies (CHCS). She leads CHCS' programmatic work, which encompasses payment and delivery system reform and integrated care for complex populations. In this role, Tricia works closely with program staff, funders, and a wide range of Medicaid stakeholders to manage a large portfolio of innovative projects that aim to fundamentally improve care delivery and the health of Medicaid populations. She works with the CEO to develop and execute CHCS' program strategy.

Tricia has substantial experience working directly with state Medicaid agencies, health plans, and providers to advance value-based payment models, including accountable care organizations, multi-payer models (e.g., State Innovation Model grants); and innovative alternative payment models for Medicaid populations. She also has led work with states in developing Medicaid policy approaches designed to promote health equity and address social determinants of health as well as efforts to promote meaningful consumer and community engagement to drive the design of more effective care models.

Prior to joining CHCS in 2010, Tricia managed the provider performance measurement, improvement, and transparency program as a senior program manager at Blue Shield of California. Tricia holds master's degrees in public policy and public health from the University of California, Berkeley. She received a bachelor's degree in political science and economics from Kenyon College.

While not at work, Tricia enjoys escaping Brooklyn to spend time outdoors, traveling to new places, having drinks with friends, and doing her best to meet her Goodreads reading goals for the year.



Stephanie Paneca-Navarro, Program Officer, Center for Health Care Strategies

Stephanie Paneca-Navarro, MSW, LSW, is a program officer at the Center for Health Care Strategies (CHCS). In this role, she supports CHCS projects related to population health and health equity, with a particular focus on building partnerships between Medicaid agencies and health and community stakeholders at the state, regional, and community levels.

Prior to joining CHCS, Stephanie served as a community health educator and an outreach specialist at Amerigroup where she was responsible for developing health education initiatives and leading a team of community health workers. She also worked at the Central Jersey Family Health Consortium as a program coordinator in the community health program department. Throughout her career, she has dedicated herself to providing education, support, and resources to marginalized populations and advancing health equity.

Stephanie holds a master's degree in social work and a bachelor's degree in psychology, both from Rutgers University.

In her spare time, Stephanie enjoys cooking and spending time with family and friends, particularly her two children. She is moved by mountains, music, and nurturing relationships.



Shilpa Patel, Associate Director, Health Equity, Center for Health Care Strategies

Shilpa Patel, PhD, is the associate director for health equity at the Center for Health Care Strategies (CHCS). In this role, she leads multiple CHCS projects that support states and health care systems to advance health equity for people served by Medicaid. This work includes developing value-based payment models designed to reduce and eliminate health disparities as well as efforts to promote meaningful consumer and community engagement to drive the design of more effective care models.

Prior to joining CHCS, Dr. Patel served as a program manager in the Section for Health Equity at the Department of Population Health of NYU Langone Health where she helped to develop culturally relevant community-clinical linkage models to reduce health disparities among communities of color. As part of this work, she gained experience creating cross-sector collaborations to address health disparities, as well as implementing and evaluating evidence-based policies and programs in community settings.

Dr. Patel has also held positions at Albert Einstein College of Medicine and Memorial Sloan Kettering Cancer Center where she worked on projects that sought to increase access and utilization of cancer-related services for communities of color. She also completed the ASPH/CDC/PRC Minority Health Fellowship Program at the Association of Schools and Programs of Public Health.

Dr. Patel received her PhD in public health from New York University. She holds a master's degree in public health from the Mailman School of Public Health at Columbia University with a certificate in Comparative Effectiveness Outcomes Research, and a bachelor's degree in public health and psychology from Rutgers University.



Vicki Quintana, Senior Program Officer, Center for Health Care Strategies

Vicki Quintana, MSPH RN, is a senior program officer at the Center for Health Care Strategies (CHCS). In this role, she supports the Advancing Health Equity project in its work to eliminate disparities in health and health care. She also works on projects related to delivery system and payment reform that promote accountable care and improve population health.

Prior to joining CHCS, Vicki worked in hospice, palliative, and home health care, and at Program of All-Inclusive Care of the Elderly (PACE) programs, where she provided patient care and implemented quality improvement programs.

Vicki holds a master's of science degree in public health and bachelor's degree in nursing from the University of North Carolina at Chapel Hill. She earned a bachelor's degree in nutrition science from University of California, Davis.

When Vicki is not working, she enjoys hiking, snowboarding, and learning new things. She is an avid podcast listener and loves a good cup of coffee.



Anne Smithey, Program Officer, Center for Health Care Strategies

Anne Smithey, MPH, is a program officer at the Center for Health Care Strategies (CHCS). In this role she supports initiatives designed to advance payment and delivery system reform. She supports a number of projects that work to promote health equity, including Promoting Health Equity through Primary Care Innovation in Medicaid Managed Care and Advancing Health Equity.

Prior to joining CHCS, Anne worked as a research and evaluation intern at The Commonwealth Fund where she supported internal evaluation efforts and assisted with policy research. She has also interned in a variety of other health care-related positions, focusing both on quality of care and access to health insurance.

Anne holds a master's degree in public health from the Mailman School of Public Health at Columbia University, with a certificate in health policy analysis. She has a bachelor's degree in health science from Northeastern University.

While not at work, Anne enjoys running, trying new recipes, and playing unnecessarily complicated board games.



Jennifer Moore, Founding Executive Director, Institute for Medicaid Innovation

Jennifer E. Moore, PhD, RN, FAAN is an internationally recognized leader in Medicaid and maternal child health. With more than 30 years of experience, her work, at the intersection of clinical practice, research, and policy, positions her as a thought leader and a passionate advocate for the Medicaid program and the individuals, families, and communities it serves. This multi-faceted emphasis makes her a respected participant in the national dialogue on these and other health care topics. As the founding executive director of the Institute for Medicaid Innovation (IMI) and assistant research professor at the University of Michigan medical school's department of obstetrics and gynecology, Dr. Moore focuses her efforts on strategically bringing together payers, clinicians, researchers, and government to design and evaluate innovative approaches to address maternal health issues such as alternative payment models, inequities and disparities, social determinants of health, community voice and partnership, and a full range of perinatal specific topics.

Dr. Moore's current grant-funded research projects include work with the Robert Wood Johnson Foundation to assess Medicaid access and coverage through the first national longitudinal survey of Medicaid managed care organizations in key categories, including value-based purchasing, high risk care coordination, women's health, pharmacy, child and adolescent health, long-term services and supports, behavioral health, social determinants of health, telehealth, and equity and disparities. She is also leading a W.K. Kellogg Foundation funded national midwifery and Medicaid learning collaborative to increase access and coverage to high-value, evidence-based maternal models of care that are underutilized in the Medicaid program. She is also involved in the Advancing Health Equity learning collaborative focused on reducing disparities through payment and delivery system reform among other groundbreaking work led by the Institute for Medicaid Innovation.

A sought-after presenter and speaker, Dr. Moore has addressed audiences around the world on such topics as trends in Medicaid, value-based payment and alternative payment models, maternal mortality and morbidity, midwifery-led models of care, and structural racism and inequities in Medicaid. She has authored pieces in such peer-reviewed journals as the Journal of the American Medical Association, the Journal of General Internal Medicine, Obstetrics & Gynecology, Journal of Medicaid Economics, Women's Health Issues, Birth, and the International Journal of Gynecology and Obstetrics. Currently she is a peer reviewer for Birth, Women's Health Issues, International Journal of Health Policy and Management, and the Journal of Medical Economics.

Dr. Moore translates research findings combined with her clinical practice expertise into actionable national and state policy solutions. She remains current on maternal health issues and the effects of social determinants of health and disparities by volunteering her time as a registered nurse at a federally qualified health center in Washington, DC. She also helps to educate the next generation of health care providers and health services researchers in her role at the University of Michigan medical school. She has shared her expertise across borders through her global health work, including presentations at the

2018 Pujiang Forum on Pediatrics in Shanghai, China. She served as U.S. Health Services Research Representative to the World Health Organization in Geneva, Switzerland, and has conducted global health research in West Africa.

Prior to forming IMI, Dr. Moore spent three years at the Agency for Healthcare Research and Quality (AHRQ), ultimately serving as the senior advisor and senior health scientist in the agency's Office of Women's Health & Gender Research. In that role, Dr. Moore leveraged her experience in the Office of Extramural Research, Education, and Priority Populations to focus research conducted at HHS through the lens of delivery system models and patient-centered outcomes. She gained public policy experience as Director of Government Affairs for the Michigan Nurses Association and as Director of Government Relations for the American College of Nurse-Midwives before joining the National Association of Chain Drug Stores as Director of Policy and Programs.

Dr. Moore has served on numerous boards, committees, and task forces, including those for the American Academy of Pediatrics; the Institute for Healthcare Improvement; the National Academies of Science, Engineering, and Medicine; the Patient-Centered Outcomes Research Institute; and the National Quality Forum.

Many honors and awards have been conferred on Dr. Moore, including the Carole Weisman and Gary Chase Gender-Based Research of the Year Award, presented in 2017 by AcademyHealth. During her three years at AHRQ, she was honored with the Director's Award of Merit four times.

An inducted fellow of the American Academy of Nursing and Women of Impact, Dr. Moore holds PhD and Master's degrees in Health Systems and Policy from the University of Michigan, as well as a Bachelor of Science in Nursing.



**Andrea McGlynn, Health Policy and Program Associate,
Institute for Medicaid Innovation**

Andrea McGlynn (she/her), MSN, APN, CNM, is the health policy and program associate at the Institute for Medicaid Innovation where she is responsible for engaging leaders across the country to disseminate and implement equity-based clinical and programmatic innovation in Medicaid. Ms. McGlynn was previously the director of clinical services for CountyCare Health Plan, the Medicaid Managed Care Community Network of Cook County Health, a unique public, provider-based model and the largest Medicaid health plan in Cook County, IL.

Ms. McGlynn has over 25 years of experience within safety net health care, having directed programs in care management, quality improvement and medical home transformation at federally qualified health centers, with an emphasis on comprehensive perinatal care. Her clinical experience includes full-scope community midwifery as well as hospital, ambulatory, and home-visiting nursing practice. She served as Policy and Research Advisor at the Royal College of Midwives in London, England addressing maternal and child health policy and practice issues within the National Health Service.



Yontii Wheeler, Health Policy and Research Assistant, Institute for Medicaid Innovation

Yontii (she/her) is a health policy and research assistant focusing on birth equity at the Institute for Medicaid Innovation (IMI). She was born and raised in Washington DC and attended The George Washington University where she received her Bachelor of Science in Public Health. After graduation, she joined Teach For America as a Corps member in Charlotte, North Carolina. During the 7 years she served as a fourth-grade educator with Charlotte Mecklenburg schools, she also held the positions of grade level chair, math team lead, teacher coach, and Expanded Impact teacher. While teaching, Yontii infused her passion for social justice and racial/health equity into her class environment. She recently graduated from The University of North Carolina's Gillings School of Global Public Health and received an MPH concentrating in health equity, social justice, and human rights. In her current position with IMI, Yontii is excited to focus her skills on advancing maternal health research and improving outcomes for birthing people of color.

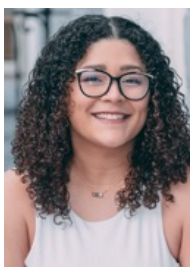


Ellie Tumbuan, Founder and Head of Strategy and Culture, The Justice Collective

Ellie is the eldest multiracial, queer daughter of an immigrant from the largest Muslim country in the world. An organizational strategy and equity, diversity, and inclusion (EDI) specialist with a 20-year career in management consulting, leadership and program development, communications, and open data and civic technology, she believes that individuals and communities are the experts of their own experience and that asset-based approaches deliver the most impact.

Ellie spent over a decade in social impact on international programs and organizational effectiveness, prior to advising on program, product, and business strategy as Director of Impact at Third Plateau Social Impact Strategies. She has served as a mentor to Founder Institute, regularly advises on business strategy, and speaks regularly on identity, leadership, and civic engagement.

Ellie has been interviewed by and featured in the Washington Post, USA Today, Silicon Valley Business Journal, and Tech Inclusion's D&I Leader Spotlight for her EDI expertise. Ellie has a Masters of Public Administration with a concentration in Urban and Strategic Management from San Francisco State University, and a specialty in Generative Somatics and Emotional Intelligence.



Jenna Ortiz, Senior Consultant, The Justice Collective

Jenna Ortiz (she/her/hers/ella) is a diversity, equity, and inclusion (DEI) practitioner, coach, operational strategist, and systems guru. She's a skillful facilitator who leads with empathy, vulnerability, and real-life experience. DEI relies on a balance between acknowledging individuals' shared humanity and being able to navigate discomfort and accountability when harm has been done. Jenna does this masterfully, creating an environment that allows all individuals to show up fully to engage in this work. She has extensive in-person and virtual facilitation experience and understands what's needed to support participants in both spaces. She has consulted for many organizations, big and small, private and public. These have included non-profits, tech organizations, academia, advocacy organizations, and more. She brings a wealth of experience to all her projects and understands that every organization enters its DEI journey from a unique place, and no two projects are the same.

In addition to DEI facilitation and strategy support, Jenna is a Certified Professional Diversity Coach (CPDC). She understands that in order for intentional organizational change to be successful, organizational leaders must undergo their own individual DEI and identity journeys. Jenna is skilled and equipped to support them with her coaching practice. As a CPDC, Jenna relies on empowerment coaching techniques to dismantle barriers that prevent leaders from moving forward and empower them with the tools to be strong, empathetic leaders within their organizations and communities.

She received her Bachelor of History, focusing on International Social Justice, from Virginia Commonwealth University (VCU). Her final thesis, titled “The War on Drugs & The Systemic Incarceration of African American Men,” focused on how legislation and domestic policy passed to combat drug use systemically incarcerated African American men at disproportionately higher rates than that of their White counterparts. Jenna went on to obtain her Masters of Arts in International Affairs from The New School Julien J. Studley Graduate Program in International Affairs, with a focus on governance and human rights, and development. Her research areas included religious colonialism in Africa, trade agreements’ impact on health equity, and policy comparisons on children’s rights.



Daniela Porcelli, Consultant, The Justice Collective

Daniela is a Diversity, Equity, and Inclusion Consultant with The Justice Collective (TJC). She specializes in research and advocacy, which she utilizes to inform the assessments and training she conducts at TJC, working to ensure each client’s individual needs are met with compassion.

Daniela has over seven years of experience as a project manager. She helped to develop the ongoing Academic Success Program geared towards students on academic probation at Queensborough Community College within the City University of New York. Here, she also served as a supervisor in the Registrar’s Office leading multiple programs on the college’s growth and development. Daniela has extensive research experience on gender-based violence and completed projects in both Chilumba, Malawi with adolescent girls and Lesvos, Greece with refugees. From there, she continued to work closely on gender-based violence in advocacy as a Program Associate at the NGO Working Group on Women, Peace and Security conducting research on international peacekeeping missions and uplifting women peacebuilders by organizing their presence at the UN Security Council. Daniela’s work in the international sphere continued with an Evaluation Consultancy with the United Nations Fund for International Partnerships before she made her way to TJC.



Marjorie Stamper-Kurn, Senior Consultant, The Justice Collective

Marjorie is an organizational development professional with a long-term focus on equity, diversity, and inclusion. She has been a student of race and racial justice since being enrolled as a white child in an Asian American Studies program for 4-6th graders.

A systems thinker with a commitment to social justice, Marjorie works across sectors to create strong and equitable organizations and communities. To client engagements, she brings an organizational development tool kit with a particular focus on developing values-based programs, practices, and policies. Prior to consulting with TJC, Marjorie delivered social emotional learning and diversity and inclusion programming to classrooms and school communities in the San Francisco Bay Area. As an internal consultant, she led the organizational culture and diversity functions of Sapient Corporation and designed a mentoring program and coordinated other efforts to increase retention and promotion of early career scientists of color and female engineers for Lawrence Berkeley National Laboratory. To her delight, each organization, like each individual, with whom she has worked has been unique and has demonstrated the potential for meaningful progress.



Meher Singh, Consultant Contractor, The Justice Collective

Meher Singh, MPH, she/her, is a Senior Program Manager at the Illinois Public Health Institute and supports the capacity building and technical assistance needs of the Office of Health Equity in All Policies in the Chicago Department of Public Health. Health Equity in All Policies work consists of implementing structural changes to decision-making to consider health and racial equity, building capacity for equitable policy making and normalizing health equity framing across sectors of government, and organizing transformative community and government partnerships to build, share and shift power. In addition, Meher works as an Equity, Diversity and Inclusion consultant with The Justice Collective and has supported projects as they relate to training, assessment, advising and capacity building. She has a background in health equity; equity, diversity and inclusion as well as data analytics and evaluation and was awarded a 2022 Health Equity Awakened Fellowship for health equity leaders in government by Human Impact Partners.

Robert Wood Johnson Foundation Team



Monique Shaw, Senior Program Officer, Robert Wood Johnson Foundation

Monique Shaw is a senior program officer at the Robert Wood Johnson Foundation. A committed public health practitioner, she draws upon her prior work in community health education, health policy research, program coordination, and community outreach to transform systems and build a Culture of Health that provides everyone a fair and just opportunity for health and well-being. She views her work as enabling health care, public health, and social service systems to work closely together to disrupt systems of oppression by centering communities most impacted by inequity. She strives to leverage philanthropic resources to support systems change, power building strategies, and transformative leadership to advance racial and health equity. Shaw is a full spectrum doula supporting and advocating with birthing people of color throughout their reproductive health journeys. She approaches her overall work through a reproductive justice lens where she advances efforts that value health as a human right and create opportunities and conditions for families and communities to thrive. Shaw earned her doctorate in health policy from the University of the Sciences in Philadelphia, a Master of Public Health from Drexel University with a focus on community health and prevention, and a BS in psychology from Howard University.



Andrea Ducas, Senior Program Officer, Robert Wood Johnson Foundation

Andrea Ducas is a senior program officer with the Robert Wood Johnson Foundation working to help build a Culture of Health. Having joined the Foundation in 2012, she praises its “unique vantage point at the nexus of health policy development and program implementation.” She describes the best part of her job as “having the opportunity to help connect inspiring people working hard to disrupt the status quo and improve health.” In her role, Andrea contributes to the Foundation’s efforts to find ways to transform health care systems and to push for health policy changes that have a meaningful impact on people’s lives. She has launched and managed programs related to payment and delivery system reform, tackling inequities and forms of structural oppression in health care, and advancing policy change through authentic community engagement, better access to data, and power-building. Andrea is also involved with the Foundation’s efforts to advance a Culture of Health in New Jersey.

Previously, Andrea served as development and communications associate for the Center for Family Representation (CFR), a nonprofit law and policy organization in New York City. As the chief marketing officer of EveryDoc.com, Andrea helped to develop and design an online community that sought to enhance the exchange of health information between medical professionals, enable patient feedback to promote practice improvement, and empower people to seek out clinicians that met their own individual needs and preferences. Earlier in her career, she was a Visiting Scholar with the United States Office of Disease Prevention and Health Promotion.

Andrea earned a BA in International Relations from Brown University and an MPH in Health Policy and Management from Columbia University’s Mailman School of Public Health.

Born in (always) sunny south Florida, Andrea currently resides in (sometimes) sunny Jersey City with her husband, Patrick Toussaint, and their young son. They enjoy being involved in their community, international travel, concerts, running, and spending time with friends.



Kelsey McIntosh, Program Associate, Robert Wood Johnson Foundation

Kelsey McIntosh joined the Robert Wood Johnson Foundation (RWJF) in 2022 as a program associate focused on transforming health and healthcare systems. Her work in global health and sustainable development brings a unique perspective to what it means to build a Culture of Health in the United States. Kelsey is particularly interested in addressing social determinants of health and decreasing disparities that result in poor access to high-quality, equitable healthcare.

Before joining RWJF, Kelsey was a graduate research assistant on a project through Emory University. The project aimed to identify how the COVID-19 pandemic impacted the lives of people living with HIV in Georgia, in order to understand community needs and influence pandemic-related policy decisions. Previously she served as a global health intern and an ORISE fellow at the Centers for Disease Control and Prevention (CDC) on the National Public Health Institutes (NPHI) team where she assisted in efforts to establish and strengthen NPHIs outside of the United States. Kelsey also worked abroad in Central America and West Africa with a nonprofit organization that aimed to address health disparities and break the cycle of poverty in rural communities through microfinance, healthcare access, and public health infrastructure improvement initiatives.

Kelsey earned her MPH from Emory University's Rollins School of Public Health in the Hubert Department of Global Health, where she concentrated in Community Health and Development. She holds a BS in Public Health and Spanish from Rutgers University.

Kelsey currently resides in her home state of New Jersey with her dog, Cooper. In her free time, she enjoys music, crafts, and connecting with friends and family.

National Advisory Committee (NAC)

The AHE NAC is comprised of a group of individuals who bring a multitude of perspectives, representing the range of organizations and individuals that are a part of the AHE Learning Collaborative. They have a strong understanding of equity and antiracism principles, as well as a practical understanding of what implementation looks like. The NAC supports the program by bringing fresh perspectives to support continuous improvement and guide program staff to help identify potential misconceptions or faulty assumptions regarding approaches to equity-focused care and payment transformation.



Nathan Chomilo, MD, FAAP, Medical Director, Medicaid & MinnesotaCare, Minnesota Department of Human Services and Pediatrician

Dr. Nathan T. Chomilo is Medical Director for the State of Minnesota's Medicaid & MinnesotaCare programs and practices as a General Pediatrician with Park Nicollet Health Services/HealthPartners. He also served as the State of Minnesota's COVID-19 vaccine equity director and is currently a Senior Advisor on Equity to the Minnesota Commissioner of Health. He received a Zoology degree from Miami University (Oxford, OH) and graduated from the University of Minnesota Medical School. He completed his combined residency in Internal Medicine and Pediatrics at the University of Minnesota and was the Pediatric Chief Resident at the University of Minnesota Children's Hospital. His advocacy work has included the impact early childhood intervention and healthcare access have on the long-term prospects of our children and how physicians and health systems can address racial & health equity. He is a member of the American Academy of Pediatrics Council on Early Childhood and the Section on Minority Health, Equity & Inclusion (MHEI), serving on MHEI's Executive Committee and is one of the Early Childhood Champions for the MN chapter of the AAP where he also serves on the board of directors. He is an Adjunct Assistant Professor of Pediatrics at the University of Minnesota Medical School, cofounded the organization Minnesota Doctors for Health Equity, serves on the board of directors of Reach Out and Read, was formerly appointed to the Minnesota Governor's Early Learning Council and serves on the steering committee of the Minnesota Perinatal Quality Collaborative. His work has been recognized by Reach Out and Read National which awarded him the 2018 Medical Champion Achievement Award, the City of Minneapolis Department of Civil Rights which recognized him as a 2019 History Maker at Home recipient, Minnesota Physician which named him a one of the 100 most influential health care leaders in 2020 and the Minnesota Medical Association which awarded him the President's Award in 2021.



Karen Dale, RN, MSN, Market President for AmeriHealth Caritas District of Columbia and Chief DEI Officer for AmeriHealth Caritas

Karen M. Dale, R.N., MSN, Stakeholder Engagement Core member, is Market President for AmeriHealth Caritas District of Columbia, a mission-based Medicaid Managed Care Organization in Washington, D.C. Dale is also the Chief Diversity, Equity and Inclusion Officer for the AmeriHealth Caritas Family of Companies. Her focus includes applying a health equity lens to impact all levels of policies, processes, decisions, laws and outcomes for the communities AmeriHealth Caritas serves. She also leads a decidedly metric-driven business approach to mobilize leaders and accelerate strategies to advance diversity, equity and inclusion inside and outside the walls of AmeriHealth Caritas. As a result, opportunities for people to experience health, wholeness and belonging are enhanced by addressing the social, economic and environmental conditions that are drivers of poor health. Dale's vision is notably reflected in key programs addressing Black maternal health, racism, housing, transportation, violence interruption and food insecurity. In addition, her philosophy that health care must evolve into a health ecosystem that promotes wellness without barriers, starting where people are, has led to several collaborative relationships with providers, community partners, philanthropists and businesses to implement sustainable, scalable solutions with high impact.



LaKeesha Dumas, Consumer Expert and Office of Consumer Engagement Coordinator for Multnomah County, Oregon

LaKeesha Dumas was born and raised in Portland, OR where she has seen first-hand the gentrification, gang violence, drug epidemic, and trauma faced by her community. She currently works as the Office of Consumer Engagement Coordinator for Multnomah County, Oregon and has a wealth of knowledge through her work as well as her own lived experience in recovery from a substance abuse disorder and mental health challenges. Since being in recovery, she has worked tirelessly to help her community foster hope and connect with the appropriate resources to become healthier and overcome barriers to recovery. LaKeesha is certified by the State of Oregon as a Community Health Worker, Peer Wellness Specialist, Adult Addictions Peer Support Specialist, Adult Mental Health Peer Support Specialist, and Youth and Young Adult Peer Support Specialist. In her work, she helps to pave the way for more peers and people with lived experience to be at the tables where decisions are being made about consumers' health and needs.



Dennis Heaphy, Consumer Expert and Health Justice Advocate at the Disability Policy Consortium

Dennis is a Health Justice Advocate at the Disability Policy Consortium (DPC), a cross-disability civil rights organization in Massachusetts. His activities include: co-chair to Disability Advocates Advancing Our Healthcare Rights (DAAHR), a statewide grassroots disability coalition; chair to Massachusetts dual eligible demonstration "One Care Implementation Council"; vice-chair of MA Delivery System Reform Incentive Payment (DSRIP) Program advisory committee; and several national committees. He also heads DPC's YesHealth Participatory Action Research team. One project being undertaken is research on the experiences of people with disabilities and a co-occurring opioid substance use disorder. Dennis is committed to advancing equity at the intersectional level to address intentional discrimination and/or de facto biases towards persons with

disabilities who are members of racial and minority populations. This requires tackling disparities in health access and outcomes for persons with disabilities due to racism and other SDOH. representing low-income individuals. He received his master of public health and master of divinity from Boston University and master of education from Harvard University.



Sinsi Hernández-Cancio, JD, Vice President, Health Justice, National Partnership for Women & Families

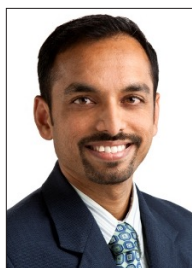
Sinsi Hernández-Cancio is a vice president at the National Partnership for Women & Families, where she leads the Health Justice team. She is a national health and health care equity policy and advocacy thought leader with 25 years of experience advancing equal opportunity for women and families of color, and almost 20 years advocating for increased health care access and improved quality of care for underserved communities. Sinsi is deeply committed to transforming our health care system to meet the needs of our rapidly evolving nation so we can all thrive together. She believes that our future prosperity depends on ensuring our health care system routinely provides excellent, comprehensive, culturally centered and affordable care for every single person, family and community, and that this requires the dismantling of structural inequities including racism, sexism, ableism, homophobia, transphobia, xenophobia and religious bigotry. Sinsi is a recognized leader in the national health equity movement, a sought-after strategic advisor and a dynamic, inspiring speaker. She has presented at national events across the country and served on numerous advisory committees for organizations including the National Academy of Medicine, the National Committee for Quality Assurance, the Patient Centered Outcomes Research Institute, the Robert Wood Johnson Foundation, the National Center for Complex Health and Social Needs and the American Association of Pediatrics. She has published extensively and has appeared in national and state level English and Spanish television, radio and print media. Sinsi's extensive experience in health and health equity policy and advocacy spans the state government, labor and non-profit arenas. Prior to joining the National Partnership's staff, she was the founding director of Families USA's Center on Health Equity Action for System Transformation, where she led efforts to advance health equity and reduce disparities in health outcomes and health care access and quality by leveraging health care and delivery system transformation to reduce persistent racial, ethnic and geographic health inequities with an intersectional lens. Prior to that, she advised and represented two governors of Puerto Rico on federal health and human services policies, and she worked for the Service Employees International Union (SEIU) as a senior health policy analyst and national campaign coordinator for their Healthcare Equality Project campaign to enact the Affordable Care Act.

Born in San Juan, Puerto Rico, Sinsi is bilingual and bicultural. She earned an A.B. from Princeton University's Woodrow Wilson School of Public and International Affairs and a J.D. from New York University School of Law, where she was an Arthur Garfield Hays Civil Liberties Fellow, and won the Georgetown Women's Law and Public Policy Fellowship. She lives in Fairfax with her husband, teenage son and two rescue dogs. She loves sci-fi, board games and expressing her love for family and friends by feeding them.



Jay Ludlam, JD, Assistant Secretary, Medicaid Transformation, North Carolina Department of Health and Human Services

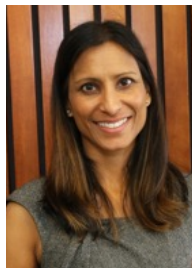
Jay Ludlam joined the NC Department of Health and Human Services' Medicaid program in August 2017. Mr. Ludlam led the statewide NC DHHS Medicaid Transformation project and launched the biggest change in NC Medicaid's history. North Carolina's Transformation project is recognized for its innovation and commitment to whole-person care, including addressing unmet resource needs. He is an attorney and executive with extensive experience in Medicaid, managed care, health care delivery reform, and quality and care management innovations. Before joining the Department, he served as an Assistant Attorney General for Missouri in its Medicaid Fraud Control Unit and as Missouri's acting state Medicaid Director.



Srinivas Merugu, MD, Chief Medical Officer and Vice President, Population Health, UnitedHealthcare Community Plan of Ohio and Internist

Dr. Srinivas Merugu is an Internist with over 10 years of clinical practice and 15 years of hospital administration and health plan experience. He obtained his medical degree from Osmania Medical College in Hyderabad, India, and completed his Internal Medicine residency at St. Vincent Charity Hospital in Cleveland, Ohio. He was part of a multispecialty group practice in Cleveland until 2014. At St. Vincent Charity Medical Center, he served in several leadership positions including Associate Residency Program Director, Chair of Hospital Performance Improvement and Patient Safety, Chair of the Ethics Committee and as the hospital's first Chief Medical Informatics Officer. His passion for innovation, management of complex populations and health policy leadership drew him to the role with United Healthcare Community Plan of Ohio. As Chief Medical Officer and Vice President of Population Health, he led the population health management team in setting and delivering on strategic clinical, quality, health equity, financial and performance improvement goals. He led the health plan in attaining the NCQA Multicultural Health Care distinction as part of the effort to bring equity to the population his plan served, through leadership of strategy development, program implementation, building stakeholder collaboration and advocacy within and outside the organization. He is currently serving as a Regional Chief Medical Officer for United Healthcare's Community and State plans where he will continue to lead efforts geared towards achieving the Institute for Healthcare Improvement's Quintuple Aim.

Srinivas is a long-time resident of Cleveland, OH, living in the beautiful Ohio City neighborhood of the city, with his wife and son. He is a strong believer in personal growth through reading, arts, sports and travel. He supports his local community through engagement in literacy, community journalism and environmental improvement initiatives and organizations.



Pooja Mittal, DO, Medical Director of Health Equity at HealthNet and Family Physician

Dr. Mittal is Medical Director of Health Equity at HealthNet, a Medicaid managed care organization. She is a family physician and uses this lens to design strategic initiatives to improve care for the most vulnerable. She is a member of the leadership team that works to further equitable care through a population health model for all HealthNet members. She has an expertise in digital health through her work in the HealthNet Digital Platforms Workgroup devising a defined digital strategy to support quality and member engagement.

Dr. Mittal also works at the National Clinicians Consultation Center at UCSF, a national HIV/AIDS warmline, where she is recognized as a national expert on Perinatal HIV care. She is an Adjunct Associate Professor at University of California, San Francisco and Stanford University School of Medicine. In addition to her clinical work, she has published in the areas of well-child care, group visits, preconception care, health equity and perinatal HIV.



Denise Octavia Smith MBA, CHW, PN, Founding Executive Director, National Association of Community Health Workers

Denise Octavia Smith, CHW, PN, MBA is the founding Executive Director of the National Association of Community Health Workers, Visiting Scholar at the Harvard Medical School Center for Primary Care Program in Global Primary Care and Social Change, Aspen Institute Healthy Communities Fellow, and a Robert Wood Johnson Culture of Health Leader. As a woman of African descent, a Community Health Worker, certified patient navigator and survivor of a rare chronic disease, Denise envisions a culture of health where individuals have self-determination and dignity, where communities meaningfully contribute to system design and governance and where societies eliminate structural barriers to well-being. During the COVID-19 pandemic, Denise co-founded the Community Based Workforce Alliance and the Vaccine Equity Cooperative to advocate for national racial equity principles and policies that affirm and sustain community expertise and capacity in COVID-19 response and community recovery and developed the first National CHW Policy Platform with recommendations for public and private institutions to respect, protect and authentically partner with CHWs and their Networks. Denise advises the Rockefeller Foundation, ASTHO, CDC 2109/2110 grantees, the Morehouse School of Medicine, United Health Care and the Harvard Medical School Center for Primary Care S.A.V.E. In Community and Rural Health Program among others on COVID response, CHW integration, legislation and workforce sustainability. Denise is currently funded by the Johnson and Johnson Foundation to develop a national CHW leadership team and develop a data-driven campaign to advance CHW professional identity, policy leadership and organizational capacity. She has also assembled global and U.S. federal, state and community subject matter experts to design a National CHW Registry.



Jamil Rivers, Founder, Chrysalis Initiative

The Chrysalis Initiative was born from Jamil's experiences offering guidance to women on how to thrive with breast cancer, even as she was actively receiving chemo herself. At only 39 years old, Jamil was diagnosed with metastatic breast cancer de novo. The determination to fight and survive for her family launched her into vigorous research to understand and contend with breast cancer. The extensive research Jamil undertook along her own journey became the foundation of a lifelong commitment to exploring and enacting optimal and comprehensive breast cancer care. Jamil went on to participate in numerous community health events which facilitated the design and funding of two metastatic clinical trials. This afforded her the opportunity to meet with leadership within the PA governor's office and congressional leaders in D.C. She became an advocate, using her knowledge base and experiences to help advance legislative policy, medical research, and customize support to better meet the needs of individuals who have breast cancer (particularly metastatic), Black patients and other disparate groups. Jamil is Board President of METAvivor Research and Support, Inc. She is a Young Advocate

Alum, Board Member of Living Beyond Breast Cancer and Advisory Chair of the Knowledge is Power: Understanding Black Breast Cancer series. She is a policy science and health equity advocate and metastatic advisory committee member with Susan G. Komen. In addition, she is a member and patient advisor of the Metastatic Breast Cancer Alliance. Jamil is also a Project LEAD graduate and proposal reviewer for the Breast Cancer Research program with the Department of Defense. Jamil also testified to the FDA in order to connect many women with resources for screenings, treatment, and support. She has been featured in People Magazine, the Philadelphia Inquirer, the Philadelphia Tribune, national campaigns for Anthropologie, Novartis, Pfizer and Cancer and Careers, as well as on CBS News and Good Morning America. Jamil also incorporates integrative therapies and is doing well thanks to chemotherapy coupled with improving her nutrition. She and her husband have three children and reside in Drexel Hill, PA.



Jelena Todić, PhD, MSW, Assistant Professor, University of Texas at San Antonio College for Health, Community, and Policy

Jelena Todić, MSW, PhD is a researcher, health equity strategist, and award-winning educator passionate about just places good for our health. Dr. Todić is also an assistant professor of social work at the University of Texas at San Antonio College for Health, Community, and Policy and a fellow at the Social Work Health Futures Lab, a National Program of the Robert Wood Johnson Foundation. Her research focuses on cultures, infrastructures, and praxis that grow health-affirming places.

Dr. Todić's research and praxis draw from 20 years of experience enabling equity-focused organizational and community change, designing social justice education, and practicing social work in healthcare settings. She has collaborated with numerous academic institutions, healthcare systems, and community organizations to advance equity in their work. Some of the past collaborators include UChicago Medicine, Illinois Health and Hospital Association, Dell Medical School, Barnes-Jewish Hospital in St. Louis, St. Louis Integrated Health Network, University of Kansas School of Medicine, National Conference for Community and Justice St. Louis Region, YWCA Metro St. Louis, and Wesleyan University. As a social justice educator and facilitator, Dr. Todić focuses on fostering critical consciousness, strengthening growth-fostering relationships, and supporting change agents who will take bold actions to create healthaffirming places. Critical consciousness includes the ability to notice contradictions within unjust social structures, uncover the root causes of these contradictions, reflect on the role individuals and organizations play in upholding the unjust structures, and take action to transform them.

Dr. Todić received her M.S.W. from Washington University in St. Louis and her Ph.D. in Social Work from the University of Texas at Austin.



Roberta Waite, EdD, PMHCNS, RN, MSN, ANEF, FAAN, Dean and Tenured Professor, Georgetown School of Nursing

Dr. Roberta Waite is dean of Georgetown University's School of Nursing. She joined Georgetown University's School of Nursing on May 1, 2022 as professor of nursing and assumed the leadership role of the nursing school on July 1, 2022. Dr. Roberta Waite has had a long professional career as a nurse working in trauma I level academic health systems as a clinician and administrator and in higher education working at Drexel University for the past 19 years. Waite was a tenured professor in Doctoral nursing and Associate Dean of

CommunityCentered Health & Wellness and Academic Integration at Drexel. She also served as the Executive Director of the Stephen and Sandra Sheller 11th Street Family Health Services of Drexel University, operated in partnership with Family Practice and Counseling Network. She created the Macy Undergraduate Leadership Fellows Program, an interdisciplinary program for students in the College of Nursing and Health Professions and the School of Public Health, focusing on leadership development while concurrently fostering critical consciousness using a social justice lens. Waite's scholarship and research centers on behavioral health, structural influencers of health and racial justice. Waite also serves as a board director for corporate Trinity Health (a leading, national, multi-institutional Catholic health care delivery system operating 92 hospitals in 22 states, including 120 continuing care locations encompassing home care, hospice, PACE and senior living facilities), the Family Process Institute, and Independence Blue Cross Foundation. She recently served as an expert for Governor Wolf's Think Tank to develop guidelines and benchmarks for a Trauma Informed Commonwealth of PA and served as co-chair of the Racial and Communal Trauma Prevention Action Team for HEAL PAs' Trauma-Informed Pennsylvania leadership team. Waite also serves on the Advisory Group for COACH (Collaborative Opportunities to Advance Community Health), a cross-sector collaborative that brings together health systems and community-based organizations to address community health needs in Greater Philadelphia.



Naomi D. Williams, Consumer Expert and Camden Coalition of Healthcare Providers Consumer Scholar

Naomi D. Williams is a mother on a mission to help families and caregivers navigate life with differentlyabled kids. She believes individuals with intellectual and developmental disabilities can and should lead an exceptional life. Naomi has added author, grief coach and yoga instructor to her toolbox, all tools that have served her well as an advocate and navigator. Naomi was the 2020-21 Public Policy Fellow with the Georgia Council on Developmental Disabilities, a principal in the 6,000 waiting documentary (2019), and a current 2021-22 National Consumer Scholar. Naomi has spoken on local, regional and national platforms making the connection and showing the interdependence necessary of raising a differently able child as a productive member of society. Areas of interest and expertise: maternal and infant mortality; mental health; disabilities; patient and provider communication and education; health literacy.



Juan Jaime de Zengotita, MD, Medical Director, Fenway Health

Juan Jaime de Zengotita is a primary care doctor and the Director of Medical Services at Fenway Health. Fenway Health advocates for and delivers innovative, equitable, accessible health care, supportive services, and transformative research and education. We center LGBTQIA+ people, BIPOC individuals, and other underserved communities to enable our local, national, and global neighbors to flourish. He formerly was the medical director of the Southern Jamaica Plain Health Center, and a Regional Medical Director at the BWH Primary Care Center of Excellence.. He has clinical interests in community health, racial justice and equity work, LGBTQ+ health and QI. He did his internal medicine training at the US Naval Medical Center at Portsmouth, Virginia. He identifies as Puerto Rican and Spanish ethnicity, Queer, multiracial, and male, using the he series pronouns.

2023-2024 AHE Program

Important Dates

Please be sure that all team members hold the following dates/times for important AHE program activities in 2023 and 2024. The AHE team will send out calendar invites and additional details for these activities.

EVENT	DATE	TIME	LOCATION	FORMAT
Cross-Team Learning Session	March 16, 2023	1 pm - 3 pm CST	Zoom	Virtual
Cross-Team Learning Session	July 20, 2023	1 pm - 3 pm CST	Zoom	Virtual
Mid-point All-Team Convening	October 24-25, 2023	9 am - 5 pm CST	Chicago, IL	In-person
Cross-Team Learning Session	January 9, 2024	1 pm - 3 pm CST	Zoom	Virtual
Cross-Team Learning Session	April 16, 2024	1 pm - 3 pm CST	Zoom	Virtual
Cross-Team Learning Session	July 25, 2024	1 pm - 3 pm CST	Zoom	Virtual
Final All-Team Convening	October 24-25, 2024	9 am - 5 pm CST	Chicago, IL	In-person

Thank you for joining us for the January 2023 All-Team Virtual Convening!

Please visit this [webpage](#) for additional convening materials.

The AHE team will share additional information and next steps shortly via email. We look forward to working with you!



The University of Chicago
Department of Medicine
5841 S. Maryland Ave, MC 2007
Chicago, IL 60637

Visit us at solvingdisparities.org